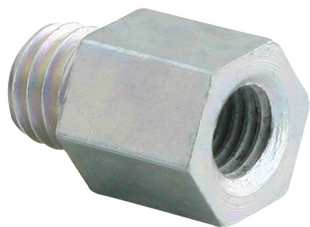


BIS Reduzierstücke (AG/IG) (ev)

(K 55 35)

Anpassung von Gewindeanschluss



6473XXX

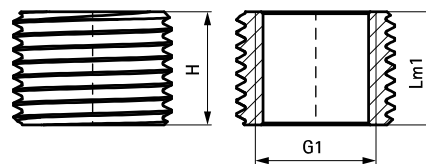
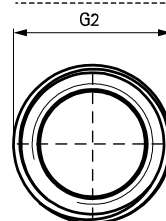
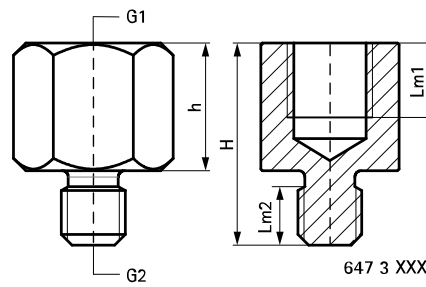
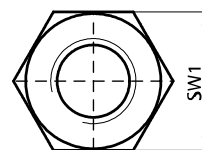
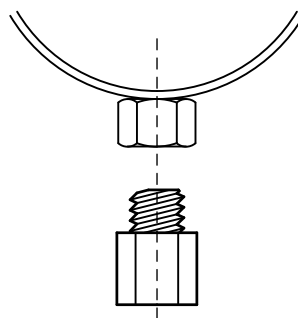
6473521
6484321

Vorteile und Eigenschaften

- zum Verbinden von verschiedenen großen Gewindestücken (M8/M10)
- Material: Stahl
- elektrolytisch verzinkt
- erfüllt die Brandschutzanforderungen der MLAR/LAR/RbALei

Art.Nr.	H (mm)	h (mm)	G1	G2	Lm1 (mm)	Lm2 (mm)	SW1 (mm)	VPE 1	VPE 2	Gew / 1 Einh (g)
6473008	19	12	M8	M6	7,0	5,5	13	100	1.000	10.00
6473206	20	12	M6	M8	7,0	6,0	13	100	2.000	15.00
6473210	23	15	M10	M8	9,0	6,0	13	100	2.000	12.5
6473212	23	15	M12	M8	8,0	6,0	17	50	-	23.4
6473221	30	22	G1/2	M8	13,0	8,0	27	50	250	79.00
6473306	21	13	M6	M10	7,0	6,0	13	100	-	16.6
6473308	21	13	M8	M10	7,0	6,0	13	100	2.000	15
6473312	25	15	M12	M10	8,0	8,0	17	50	500	24.3
6473316	32	22	M16	M10	13,0	8,0	24	50	-	65.00
6473321	31	21	G1/2	M10	12,0	8,0	27	25	250	45.5
6473408	23	13	M8	M12	7,0	7,5	13	50	1.000	17
6473410	23	13	M10	M12	8,0	7,5	13	50	1.000	17.60
6473416	32	22	M16	M12	11,0	8,0	24	50	-	66.5
6473510	32	18	M10	M16	9,0	11,0	19	50	-	53.5
6473512	32	18	M12	M16	10,0	11,0	19	50	-	49.5
6473521	15	-	M16	G1/2	15,0	-	-	50	250	15.5
6473621	25	15	G3/4	G1/2	12,0	7,0	-	50	700	44
6473721	32	20	G1	G1/2	17,0	9,0	-	10	100	78

Ab M10 Bestandteil des brandgeprüften Befestigungssystems



647 3 521 /
648 4 321